



PURPOSE + promise

little bit
FOUNDATION

2022 ANNUAL REPORT

DEAR LITTLE BIT SUPPORTER

I had known about the impact of The Little Bit Foundation for many years, but when I came in as the new CEO in November 2021, I was even more impressed by the strength of the organization and encouraged and inspired by the many wonderful people I met. Little Bit has an incredible Board of Directors, the most loving and loyal volunteers, generous and giving partners and supporters, and a team that does not quit.

Throughout the school year, the Little Bit team continued to adapt to every change presented by the pandemic, responding to the unique and shifting needs of students and families, and continuing to be a stable, willing partner to school communities facing overwhelming obstacles. We continued to go deeper and beyond our core service of essential items to offer programming in mentoring, tutoring, STEM learning, career exploration, and leadership and transferable skills training...all areas we are working to expand. We secured incentives and rewards for schools to present students overcoming two years of learning loss, were there to help school leaders recognize faculty and staff doing double and triple duties during severe staffing shortages, and sometimes pitched in to manage school-led programs in the absence of available staff. When we say we're embedded in school communities, we mean it, and school staff members tell us how often they forget that we aren't employees. In the new school year, we are bringing our embedded services to six new schools.

The decision to go deeper is a natural progression of partnership, but also has been an intentional step in our efforts to support educational equity by impacting the many areas of student development and helping them to believe in the promise of their future. In the 2022-23 school year, we're excited to introduce a case management program in six of our partner schools, which will enable us to reach deeper to impact the family base. Through our own case managers, we will work directly with up to 50 students and their families in each school to assess needs and connect them to critical resources, including behavioral health therapists that we will provide to each school.

While our programming continues to evolve, we never lose sight of the power of providing the essentials: a new coat to help a student feel warm and safe, a pair of pants hemmed for a perfect fit or pair of shoes that are just the right size, a box of grocery staples for a family of growing children, or a packet of period supplies for a young lady. We delivered more than 430,000 of these essentials in the last school year. Even in the seemingly everyday things, there are ripple effects. I recently met an ER nurse who teared up when she read the name on my shirt. She recalled how much The Little Bit Foundation had helped her children at a Little Bit partner school, while she worked her way through nursing school. She said she was able to move her family forward because there was someone walking beside her. That's powerful.

As I write this letter and we share the impact of our 2022 fiscal year, Little Bit is facing, without a doubt, its most significant challenge to date. Catastrophic flooding in July destroyed about 90% of our items and left our beautiful, newly renovated building a shell of itself. But in this loss, I am encouraged, hopeful and excited about our future...because we have our people! It's our amazing staff, community partners and you, our donors, volunteers and supporters – who keep the passion and purpose alive, who don't give up and continue the work. I recently walked through the remains of our building with a gentleman interested in learning more about Little Bit. He commented that even in the bare bones, he could see the beauty. I believe it's the spirit of our people shining through.

WE NEVER LOSE SIGHT OF THE
POWER OF PROVIDING THE
ESSENTIALS ... WE DELIVERED MORE
THAN 430,000 OF THESE ESSENTIALS
IN THE LAST SCHOOL YEAR.

More than 20 years ago, Little Bit founders, Rose Hanley and Elise Tierney, had a vision of supporting equity in the classroom, and Rose, as CEO, helped build an organization driven by this purpose and strong enough to weather the challenges. When I walked into Little Bit, I knew what all of those years working in nonprofits and developing youth services were leading me to. I have the lived experience to understand the issues of struggling families and can look through a unique lens at all of the wonderful ways we are helping to fill in gaps. I know I'm where I belong, and it's an honor to be part of this incredible mission. Thank you for everything you do to support The Little Bit Foundation.


Miranda Walker Jones
Chief Executive Officer

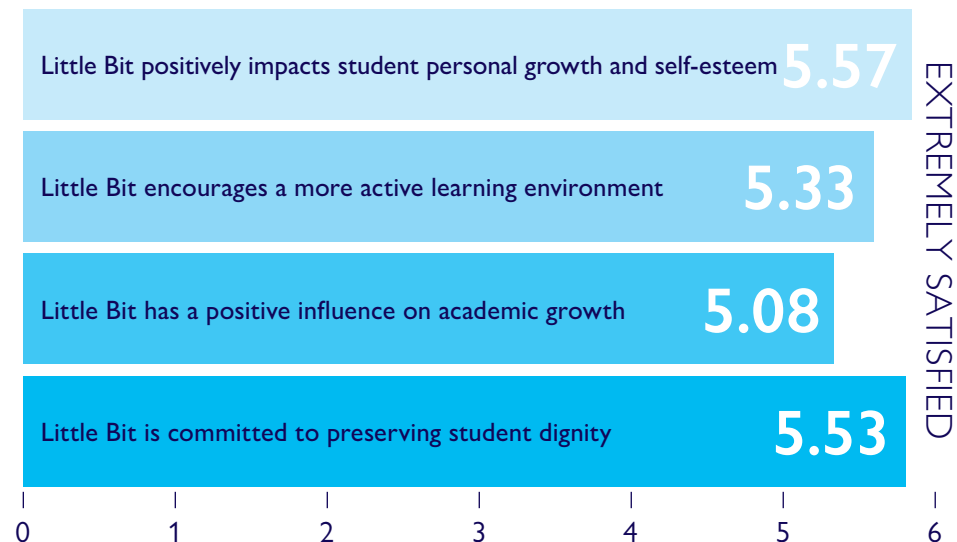


LITTLE BIT *at a glance*

“So thankful for the continued support during these unprecedented times. You literally never stopped and, even in so much uncertainty, if a family had a need, Little Bit made a way!” PRINCIPAL

SCHOOL SURVEY RESPONSES

1-6 rating, with 6 = “extremely satisfied”



“The staff and volunteers are an asset to our building.”

FAMILY AND COMMUNITY SPECIALIST

4

SCHOOL DISTRICTS

Saint Louis Public Schools, Jennings, Normandy, Riverview Gardens

8

CHARTER AND PAROCHIAL SCHOOLS

We are committed to breaking down barriers to learning for students living in poverty through partnerships and programs that serve the needs of the whole child. Our aim is to empower students to achieve their academic goals and dreams for the future, while leaving an imprint of love and hope on young lives for whom a little bit means a lot.

42

SCHOOLS

14,000

STUDENTS

14

ST. LOUIS ZIP CODES

14,000

VOLUNTEER HOURS



THE WHOLE *child*



Now in our 21st year, The Little Bit Foundation is committed to breaking down barriers and helping to level the playing field for students in under-resourced communities through in-school programs and partnerships that serve the needs of the whole child.

Our whole child model addresses needs – physical and social-emotional – introduces new educational opportunities and spans across every grade level. The vision of Little Bit is to be a source of support for students during their educational journey, so that they may realize their full potential and dreams for the future.

IT'S ALL essential

Character education and servant leadership are central to Belinda Quimby's philosophy as principal of Humboldt Academy of Higher Learning. "One of the things I love about Little Bit is that it helps connect our students to the wider community and additional role models for their life," she says. That feeling of connection and support extends to teachers, staff and parents as well, she adds. In these ways, Quimby says Little Bit has been much more than the items it provides in its first year serving the school of 150+ 3rd-5th graders. "It's been so beneficial to have such a strong community partner in a really challenging year for everyone."

YOU CAN'T UNDERRATE THE VALUE OF THE PHYSICAL ESSENTIALS LITTLE BIT PROVIDES

Still, you can't underrate the value of the physical essentials Little Bit provides, she says. "We had a significant number of students needing items from the boutique, and many families regularly used the food market this year." She recalls a mother who lost both her job and car and whose son was battling Type 1 diabetes, and a father with two rough-and-tumble boys growing faster than he could keep them in new shoes and clothes. Both frequently benefited from the resources Little Bit provides, she says. "Also, as educators, we now don't have to worry about these obstacles getting in the way of instruction, or digging into our own pockets to make sure students have what they need."

Quimby says as students became more familiar and comfortable with the services, they began advocating for their own needs. Little Bit volunteers Rich and Julie Fitzer say they too felt the nervousness of students fade over time. "Each week we were there, they would become more excited to see us and you could tell they trusted us more," says Julie.

The Fitzers first began volunteering for Little Bit in the warehouse on Mondays, but transitioned to school reps for Humboldt in the 2021-22 school year. Julie, an anesthesiology assistant, is off on Mondays and Rich, a financial planner, is able to set aside time once a week for Little Bit. "We're blessed to have the flexibility to volunteer in addition to donating, because it's so rewarding to be able to see the kids," says Rich.

The couple also believes working "on the other side" gives you a new perspective. Julie explains, "When you're packing student orders in the warehouse, you may not be thinking about the reaction of the student receiving it; how excited they become when you pull out a pair of new shoes in their favorite color or socks featuring a cartoon character they love." The Fitzers work hard to ensure sizing is correct and leave little notes on orders to the warehouse so that volunteers know more about the individual needs and preferences of each student.

On average, Humboldt received 20 student orders with multiple items each week during the year. But that number sometimes was as high as 40, say the Fitzers. "When you multiply that by 42 schools that Little Bit is serving, just the sheer volume of items going out and students impacted is astounding," says Rich. "I hate that Little Bit has to exist, but I'm so glad that it does."

ESSENTIALS

HIGHLIGHTS



For the third consecutive year, Macy's and Soles4Souls teamed up to donate new coats, which Little Bit distributed to students at Sigel Elementary and Nahed Chapman New American Academy.



During a holiday drive-through event for families of Riverview Gardens School District, the Amann, Whittle & Walsh families and friends distributed over 100 turkeys and Christmas dinners they had donated, while Little Bit handed out coats, hats and gloves.



Little Bit equipped more than 3,000 students with backpacks and school supplies during back-to-school events at various partner schools.



Grimco led an internal school supply drive competition, collecting over \$25,000 worth of supplies!



Little Bit celebrated Martin Luther King, Jr. Day with a day of service in the community, working alongside Home Depot to distribute cleaning and home supplies.

IMPACT

430,295
EVERYDAY ESSENTIALS

93,129
HYGIENE ITEMS
AND PERIOD SUPPLIES

96,198
SCHOOL SUPPLIES

28,443
UNIFORM PANTS
AND SHIRTS

17,694
EVERYDAY
CLOTHING ITEMS

21,641
SOCKS AND
UNDERGARMENTS

12,075
COATS AND WINTER
ACCESSORIES

equity IS OPPORTUNITY

Windy Winfield had never seen her second graders so engaged. “They were really captivated by all of it,” she says. The principal at Meadows Elementary, now in her third year, says that having The Little Bit Foundation as a partner enables her to bring learning opportunities to her students they might never have otherwise, such as the day in May that so energized a group of 7- and 8-year-olds.

On this day, former NFL stars Chris Long and James Laurinaitis visited the students virtually, reading from books, chatting about their own school experiences and answering questions. “The kids absolutely loved meeting them and being heard,” says Winfield. “I can’t say they really even knew who they were – they’re too young to have watched them play – but it’s the exposure to new people and experiences that gets them excited and is so important to their development.”

IT’S THE EXPOSURE TO NEW PEOPLE AND EXPERIENCES THAT GETS THEM EXCITED AND IS SO IMPORTANT TO THEIR DEVELOPMENT.

In addition to the virtual session, the students received culturally relevant books donated by The Chris Long Foundation and First Book. (The Chris Long Foundation has supported Little Bit since 2017 and has plans to bring its new EdZone program to Little Bit

partner schools in the 2022-23 school year, providing essential needs items.) In total, Little Bit distributed 3,200 books to Meadows and Sigel Elementary through this event. “Access to other things, such as books that represent them, in which they can see themselves in the characters, really boosts their self-esteem,” says Winfield.

Another Little Bit-hosted program that has inspired her students, she says, is First Lego League. Funded most recently by the Josh Seidel Memorial Foundation and coordinated in Little Bit partner schools by Maura Hampton, Little Bit Senior Manager of Academic Enrichment, First Lego League is an international competition for elementary and middle school students involving designing and programming Lego Education robots to complete tasks. Meadows has assembled a robotics team to compete with other schools for the past three school years, and in April edged out Gibson Elementary for the win in a scaled down competition due to COVID. “Still a thrilling win,” says Winfield.

“The robotics program is more than competition, it’s applying the skills of teamwork, problem solving, critical thinking; creating expectations and a sense of responsibility,” she says. “We’re so grateful to Little Bit for each of these opportunities.”

ACADEMIC EQUITY & ENRICHMENT

HIGHLIGHTS



Meadows edged out Gibson in head-to-head First Lego League competition.



Little Bit partnered with GDIT and STEMBoard to bring STEMLingo, a hands-on, introductory coding kit to 50 middle and high school students in Riverview Gardens.



KPMG helped Little Bit procure culturally relevant books and held read-ins at Woodland and Patrick Henry Elementary Schools, “allowing students to see the world through various lenses,” according to Woodland.



In celebration of Nance Elementary’s 20th anniversary, Little Bit teamed up with Myself Belts and Ready Readers to provide students with new books and belts. Nance has been a Little Bit partner school since 2015!

IMPACT

86
BOOK FAIRS

50,123
BOOKS

193
STUDENTS RECEIVED
TUTORING

600
STUDENTS ENGAGED
IN STEM

A SOLUTION TO *food insecurity*

“The coolest part of my job is being able to develop relationships with the students and families we serve,” says Rachel Harris. Harris is Little Bit’s Senior Health and Nutrition Manager, responsible for overseeing and executing our Health and Nutrition programming and partnerships. She says food access, a core aspect of this programming, has been the greatest, most consistent need among Little Bit’s service population since the start of the pandemic. “Many of our schools are located in food deserts, meaning families have limited access to affordable and nutritious food,” she says. “The pandemic, and now inflation, have made it even harder for families to meet their food needs.”

THE PANDEMIC, AND NOW INFLATION, HAVE MADE IT EVEN HARDER FOR FAMILIES TO MEET THEIR FOOD NEEDS.

Knowing the negative impact hunger and poor nutrition have on child development and learning, Little Bit has continued to expand partnerships that provide in-school food resources for students and families, says Harris. In the fall of 2021, Little Bit, St. Louis Area Foodbank and Fresh Thyme – with financial backing by the Bayer Fund – opened a free family food market inside Highland Elementary School. It became the fifth food market co-operated by Little Bit and the Foodbank in Little Bit partner schools, which collectively served more than 1,700 families in the 2021-22 school year.

Located in Glasgow Village, the market is open to families of both Highland and Glasgow Elementary

Schools on a weekly basis, offering a mix of fresh produce and dairy, shelf-stable and frozen foods, and staple grocery items. The market is also available to school staff at any time to provide for emergency student needs. Harris is on hand to accept bimonthly deliveries of food items from the Foodbank and Fresh Thyme, since “most schools don’t have the time to do this,” she says, and is present during open hours to assist students and/or families with finding items.

Highland Principal Travis Ford says that families who come through the market not only find fresh, nutritional options but respect as well. “I’ve seen Rachel help grandma carry groceries to her car, hold the baby while mom shops the shelves, offer menu tips, and just be a big help in a really respectful way,” he says. “The market, which is kept up and managed so well, is a tremendous resource for families, especially those with multiple children in the district.”

Ford says another benefit of the in-school market has been further overall involvement of parents in their children’s school life. “We are seeing some of them weekly, which gives us opportunity to develop much deeper engagement.” During the summer months, the market moves to a drive-up option, “because families still need help,” he says.

In the 2022-23 school year, Little Bit and St. Louis Area Foodbank are managing an additional six in-school markets together, while continuing to host monthly outdoor food markets for the community at three other school sites. “Based on last year’s numbers, we have the potential to serve more than 20,000 people through our markets next year,” says Harris.

HEALTH AND NUTRITION

HIGHLIGHTS



Little Bit celebrated our seventh year partnering with IFM Community Medicine and SLU School of Nursing.



Little Bit operated five in-school family food markets in partnership with St. Louis Area Foodbank and Fresh Thyme.

“There was a time a student barely had any food. I sent a text to Little Bit and they brought a large box of food the next day.” SCHOOL LIAISON

IMPACT

2,107
HEALTH SCREENINGS
AND EDUCATION
OPPORTUNITIES

274,550
POUNDS OF FOOD

7,248
INDIVIDUALS SERVED AT
MOBILE FOOD MARKETS

1,727
FAMILIES SHOPPED FREE
IN-SCHOOL MARKETS

POWER OF mentorship

Listen first, speak second. It's the most important technique that Little Bit Senior Program Manager of College and Career Readiness William Hardrick, Jr. advises the SOAR mentors to use. "Trust is the pillar of mentoring and when someone, especially a young person, feels they're being listened to without any judgment, you're more likely to develop a trust relationship," says Hardrick. After his first year as a SOAR mentor, Ron Tremayne describes the process as a journey. "William and Little Bit have put together a great program that requires time and patience to work for a young person juggling a lot of issues in their life," he says.

Tremayne's wife, Robin, has been Little Bit's lead seamstress for about eight years. "She was always telling me 'you have to get involved,' so when I was able to cut back on my work hours and learned about the mentor program, I signed up," he says. "I remember calling William after the first day and being so motivated."

The SOAR (*Seek. Own. Advocate. Rise.*) mentor program matches up Little Bit volunteer mentors with high school students to assist them in being successful in school and in planning for their future. Mentors meet with their students on campus every other week.

"Our role really is to show students the options available to them and help them get where they want to be," says Tremayne. "Sometimes, that's also helping them think differently about things, such as the young man who wants to run his own business someday, but was discouraged that it would require him to go to college. I asked him if he ever thought about businesses that he could start on his own that provide a needed service in the community, such as lawn care or window washing, showed him how you can get an LLC and just encouraged him that you don't always have to follow a traditional path."

SOAR mentor Greg Williams says he's there because he's always believed in the power of mentorship. The Director of Client Development for S.M. Wilson has been a Boy Scout leader and soccer coach. "This was another way to put my belief into practice," he says. "Even if you don't think you have anything to offer – I don't know that I have any specific skills – if you can listen to a kid and find a way to connect, they're going to remember that you cared."

When Williams first met Cameron, a sophomore, there was not an immediate connection, he admits. "He really didn't say much and had his earphones in so I wasn't sure he was listening," says Williams. "But never underestimate a kid; he was definitely paying attention." Williams eventually discovered that Cameron is the chef of his family and began sharing recipes with him. He learned that Cameron was thinking about programming for a future career and wanted to find a part-time job. After a few weeks, they were mapping out job openings within a quarter-mile of Cameron's home, so that transportation wouldn't be a problem, and preparing him for an interview with a local business.

"I'm super proud of his growth and hope to work with him again next year," says Williams. Before parting for the summer, Williams handed Cameron a blank journal – "journaling my thoughts, ideas and fears is something I try to do every day," he says – along with the seven skills he believes that if mastered will lead to success regardless of the career path, such as critical thinking, adaptability and "showing up."

"There are so many kids who don't have the same opportunities as others...that start out behind the eight ball," says Williams. "While we work as a community to remove those barriers, we can help students find a way around the eight ball to the possibilities before them."

COLLEGE AND CAREER READINESS

HIGHLIGHTS



Due to COVID concerns, Little Bit pivoted the What's Next Fair to an outdoor format with 53 vendors.



GDIT "Black Engineer of the Year" recipient, Corey Carter, shared his career path and inspired young hopefuls during a speaker series for middle and high school students.



Citi provided financial support of Little Bit What's Next programming as well as employees to conduct mock interviews with students.



The SOAR mentor program wrapped up for the year with a luncheon and certificates presented to students.

IMPACT

47
STUDENTS IN SOAR
MENTOR PROGRAM

500
AT WHAT'S NEXT
CAREER FAIR

84
AT APPLICATION DAY

131
ENGAGED IN
SPEAKER SERIES

62
PARTICIPATED IN
TRANSFERRABLE SKILLS
SEMINARS AND MOCK
INTERVIEWS

**"I look at my future
different now."**

STUDENT

GDIT

citi

FRONT LINES OF wellness

Through a partnership with Saint Louis Counseling, Little Bit provides for embedded therapists in five partner schools, who offer individual and group counseling for students, classroom presentations and contacts with parents to check on mental health status, overall wellbeing and parenting issues.

LITTLE BIT PROVIDES FOR EMBEDDED THERAPISTS IN FIVE PARTNER SCHOOLS

Therapists assigned to these schools in the 2021-22 school year reported a significantly higher number of crisis events and expressed concern about the social-emotional health of students due to the pandemic. “We definitely saw increased signs of anxiety, hopelessness and depression in students during the pandemic and all of the quarantines, and we’re watching for signs of how this health crisis will have long-term impact,” says Katie McDonough, clinical therapist with Saint Louis Counseling. “Kids are incredibly resilient and can continue with their lives while dealing with things that would knock me down... but there’s a limit.”

During the year, McDonough counseled 29 students on an individual basis, averaging seven sessions per student, and met with a group of four students for about seven sessions to process issues surrounding the loss of a parent or close relative. “Little Bit’s partnership with Nance allows me to be part of the school community, so we’re able to intervene early and as often as necessary.”

One of McDonough’s colleagues at another school told about her success with a young student:

“My success story is about an 8-year-old who experienced a traumatic event after her family was ambushed by a would-be carjacker. The carjacking was not successful, but after the incident, the student experienced severe anxiety. Her anxiety prevented her from sleeping alone, showering without someone in the bathroom, and impacted her overall happiness. She became fearful of going to school and leaving her mother because she worried that her mother would be hurt or killed.

“By introducing techniques of ‘talking back to her anxiety,’ relaxation and behavior modification – and through the help of her mother – her symptoms reduced. She was able to sleep by herself most nights, shower without someone in the room and her overall happiness improved. She also reported that her memories of the incident became significantly less intrusive in her daily life.”

In the 2022-23 school year, Little Bit is expanding counseling services, as part of a case management model that also brings direct support to families in six Saint Louis Public Schools.

WELLNESS AND FAMILY SUPPORT

HIGHLIGHTS



IMPACT

75
FAMILIES RECEIVED ONGOING NEEDS ASSESSMENTS AND SUPPORT THROUGH FEEDING HOPE PROGRAM

848
INDIVIDUAL MENTAL HEALTH COUNSELING SESSIONS, WITH

77%
OF STUDENTS DEMONSTRATING IMPROVED FUNCTIONING AND REDUCED SYMPTOMS

“The students are more comfortable with advocating for their needs than I’ve ever seen them.” PRINCIPAL

WHAT'S AHEAD

SCHOOL EXPANSION

After two-plus challenging years of COVID, the need in our community is great. Schools face staffing shortages and learning losses, families face food insecurity and struggle to afford the basic essentials. There remains a significant gap in our schools served and those that qualify for our services (currently, Little Bit is serving 1 in 5 of eligible students). We are committed to reaching more students with programs and services that positively impact their futures, and we've outlined a multi-year plan to enter new school communities, beginning in the 2022-23 school year.

2022-23 ADDITIONS

- Hancock Place School District**
 - Hancock Place Early Childhood Center
 - Hancock Place Elementary School
- Jennings School District**
 - Jennings High School
 - Fairview Elementary
- Saint Louis Public Schools**
 - Sumner High School
- Maplewood Richmond Heights**
 - Homeless population

WE ARE COMMITTED TO REACHING MORE STUDENTS WITH PROGRAMS AND SERVICES THAT POSITIVELY IMPACT THEIR FUTURES

PROGRAMS EXPANSION

Continuing to build on our partnership with Saint Louis Area Foodbank, we will be co-managing an additional six in-school food markets, for a total of 11, in the 2022-23 school year. The markets are open to school families once each week and designed to empower them with healthier options, nutrition education and choice.

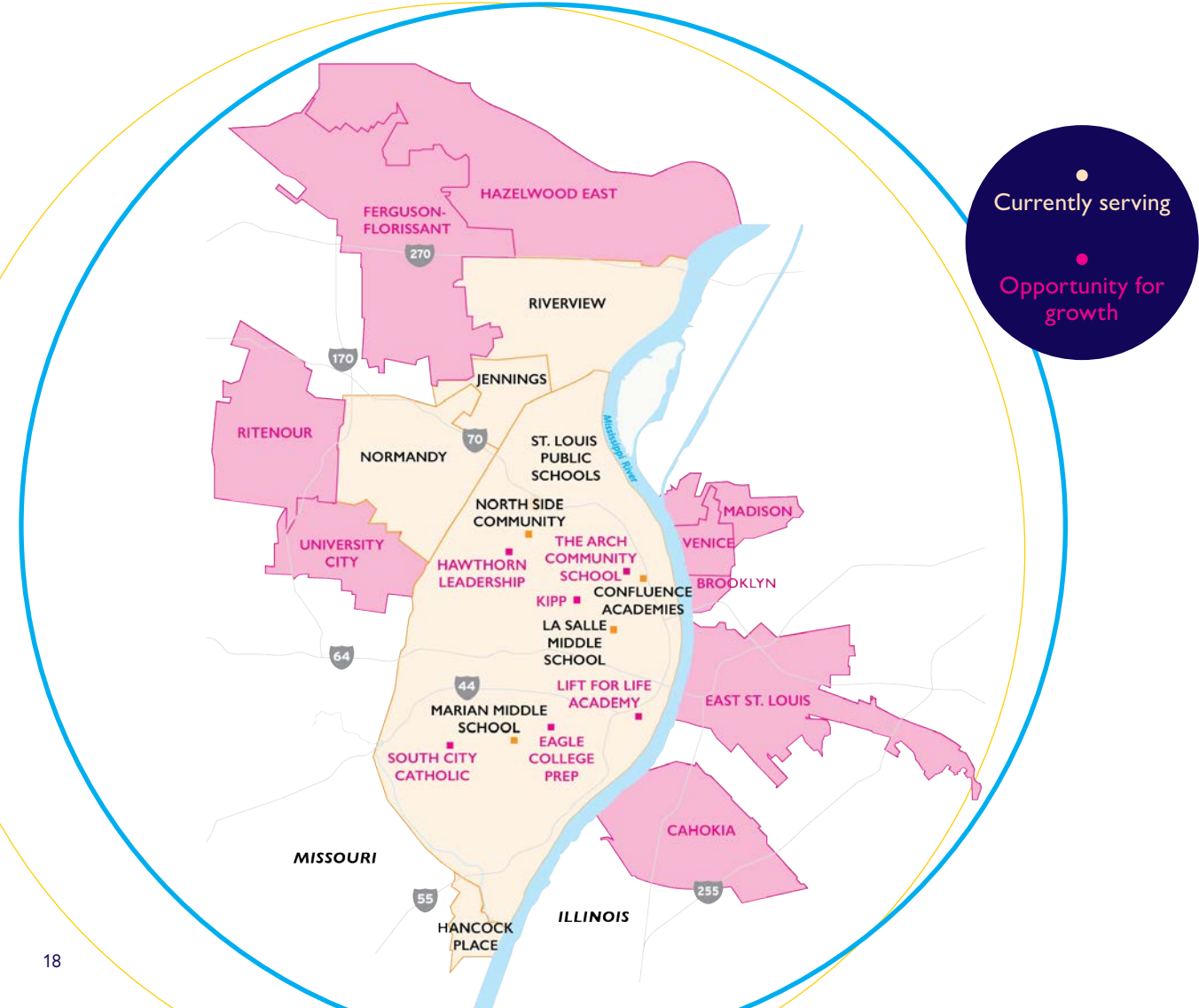
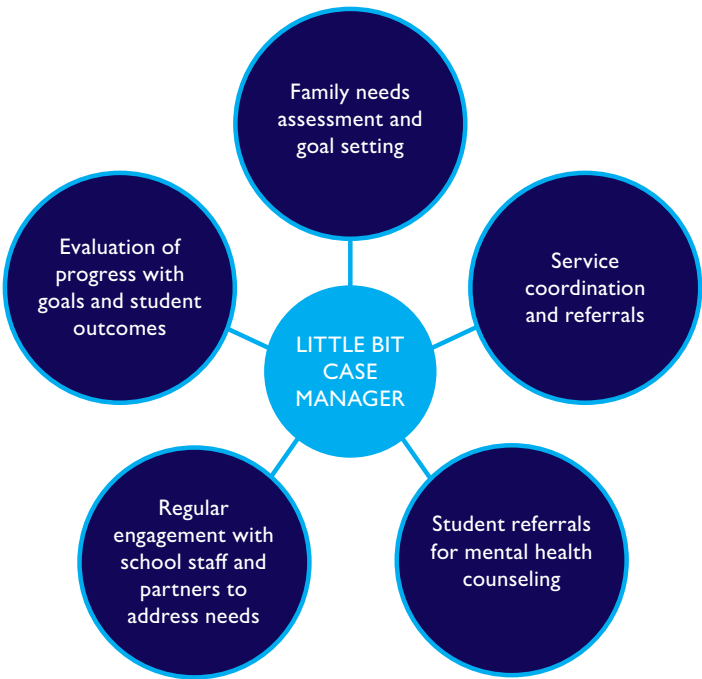
We also continue to refine and expand programming for middle and high schoolers that prepare them for graduation and beyond, with goals to increase mentoring and tutoring, continue STEMLingo program and develop career pathways in specific fields.



“Lingo was the best and a first for our students. They loved it!” PRINCIPAL

CASE MANAGEMENT

Recognizing that we have opportunity to more deeply impact student outcomes, especially in the area of mental health, by directly supporting their family and home life, we are rolling out a case management model (funded by the St. Louis Mental Health Board) in six Saint Louis Public Schools. In each school, Little Bit will embed a Case Manager to work closely with up to 50 students and their families, assessing needs and connecting families with critical resources, including those beyond Little Bit's scope. In addition, we will provide for an embedded clinical therapist in each school to engage students and families in mental health counseling as needed.



HOW TO HELP

The Little Bit Foundation is committed to breaking down barriers to learning for under-resourced students and supporting them in reaching their full potential. There are many ways for you to help!

DONATE

Donate in-kind goods and services or financially through one-time, monthly or planned giving options.

HOST A DRIVE

Host a drive in person or through Amazon for our most in-demand NEW items:

- Socks and underwear
- Hygiene items (full and travel size)
- Coats and jackets
- School supplies
- Books

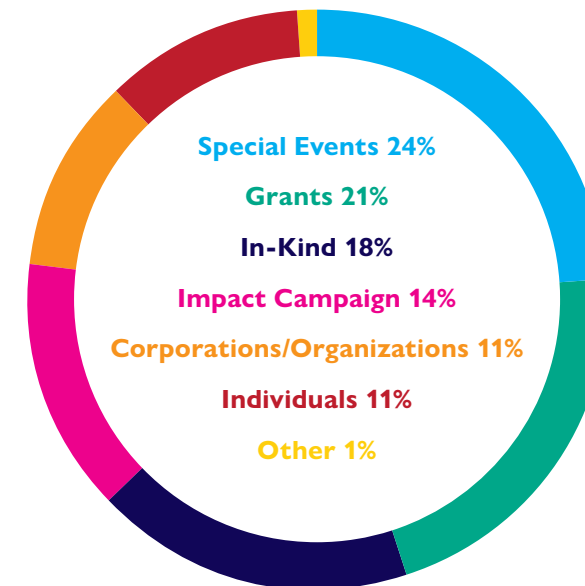
VOLUNTEER...

- As a **school representative**, working with a team to make weekly visits to schools to deliver individual items to students, size them for clothing and shoes, and assess for further needs. Districts served include Saint Louis Public Schools, Riverview Gardens, Jennings, Normandy, Hancock Place and city charter/parochial schools. Requirement: 3-4 hours each week, same day(s)/school(s)
- As a **SOAR mentor** for high school students, developing academic and career plans, and assisting them in reaching their goals. Requirement: 1 hour on campus every other week during school year
- In the **warehouse**, individually or as a **service group**, helping to pull items for student orders; count, sort and prepare items for delivery; and assemble kits. Requirement: Days/times flexible to availability
- At **book fairs**, setting up and organizing fairs at schools, helping students select reading level books and reading to them while they wait. Requirement: 2-4 hours each fair, 1-2 fairs held each week
- At **mobile food markets**, helping to unload and distribute fresh and frozen food items to community. Requirement: 9AM-noon each market, markets held at 3 school communities on the fourth Tues., Wed. and Thurs. of the month
- On a **special events committee**, helping to solicit sponsorships, auction items and event participants, as well as assisting with event planning, logistics and day-of activities. Requirement: 1-hour monthly committee meetings, four special events hosted each year

REVENUE REPORT

JULY 1, 2021 – JUNE 30, 2022

TOTAL GIVING: \$4,984,373



EXPENSES

Direct Programs 81%

Fundraising/Operations 19%

REACH

Total Donors 1,497

First-time Donors 618

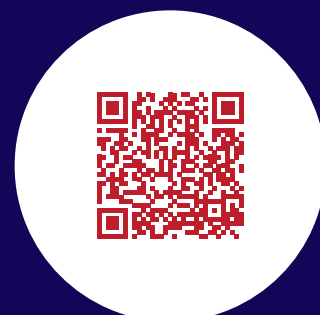
Product Drives 192

“ We had an eighth grade student who stands about 6’11”. He was elated to receive uniform pants and shirts that fit, especially since he was homeless at the time. ” PRINCIPAL

DONATE TO FLOOD ASSISTANCE

During the week of July 25, 2022, we experienced extensive damage from flood waters to our headquarters and inventory.

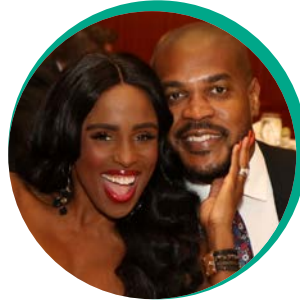
Scan the QR code to help make a difference. Your financial donation will help us to recover from this significant loss.



Little Bit received the Chick-fil-A True Inspiration Award, which was accompanied by a \$100,000 grant, receiving the highest number of local votes in an online competition.



LITTLE BIT events



\$36,000

The 2nd annual Big Fun Golf Tournament, hosted by Little Bit's Young Professionals Board, sold out foursomes at Glen Echo Country Club.

PRESENTED BY
TRUE

THE LITTLE BIT FOUNDATION
Celebrating 20 YEARS
A PROMISE

2021 JOIN THE JOURNEY GALA

\$1 MILLION+

Celebrating our 20th anniversary and retirement of co-founder Rosemary Hanley, Join the Journey 2021 was our most successful fundraiser in Little Bit history!



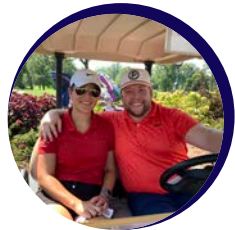
\$57,000

Music Trivia rocked St. Nicholas Greek Orthodox Church on April 2, 2022, and brought in monetary donations and school supplies.



\$71,000

Laura's Run 4 Kids returned for a fifth year to an in-person event along the Riverfront, with 300 registrants and 70 students and families participating in a morning of exercise, sunshine and fun.





LITTLE BIT *community*

It takes a village. Many people make up the ecosystem of a child's life, providing security, direct care, education, guidance and support. The Little Bit Foundation is part of the ecosystem, made up of our own network of school and community partners, volunteers, donors, board and staff members who share a common purpose. It takes all of us – a village – to create an educational environment where students are given what they need to develop, flourish, and realize their hopes and dreams.

**THANK YOU FOR YOUR COMMITMENT TO THIS
VISION AND CONTINUED GIFTS TO LITTLE BIT**



VOLUNTEERS

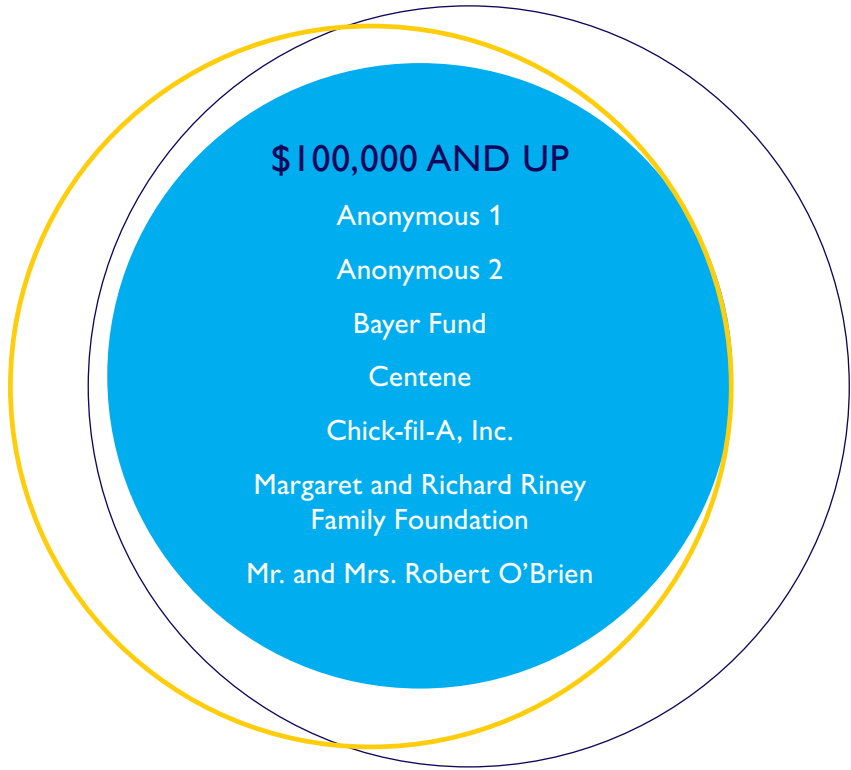
Helen Ahn	Jeanne Flood	Jack Lawlor	Tara Schultz
Nancy Akin	Allen Fox	Mary Ellen Leary	Laverne Sebben
Jan Amann	Jen Frakes	Duan Lee	Linda Shantz
Carole Anderson	Darlene Freber	Barb Lenz	Sandy Shasserre
Mary Ann Huff	Carla Freund	Sharon Leve	Gina Sheridan
Maureen Bahn	Mary Frolichstein	Susan Leve	Connie Sigmund
Nick Bahn	Gina Fusco	Mimi Londoff	Maria Sofia Patino Carranza
Anne Bearden	Susan Gausnell	Alfred Long	Jay Sriram
Lucia Berglund	Suzanne Germain	Kristine Loomis	Melissa Stanza
Mary Beth Goldman	Staci Goodbody	Kate Lottes	Kelly Steincamp
Sarah Boecklen	Greg Gorman	Sara Lucas	Teg Stokes
Lou Bonastia	Sharon Gunter	Mark Malloy	Lori Tangaro
Laura Boyce	Norm Handsher	Meg Mannion	Marilyn Teitelbaum
Sara Boyce	Richard Harris	Ellen Marsh	Susan Touchon
Sandy Brunegar	Tracy Hemphill	Zoe McNamara	Robin Tremayne
Kathy Bruns	Dale Hermeling	Kathleen Migneco	Ron Tremayne
Kelly Butler	Carolyn Hoerr	Gary Mindel	Pat Trupka
James Byrum	Maria Hudson	Jamie Moritz	Susan Van Rees
Susan Cerwin	Kenny Jackson	Mary Mosby	Cortney Vaughn
Lisa Christenson	Sandi Jansen	Rose Olivo	Kathy Vice
Stacy Clark	Suzanne Jansen	Mike O'Rourke	Madonna Visintine
Patty Dahl	Tammy Jennings	Max Osborn	Allison Wajtyna
Mary Dale	Pat Johnson	Namita Paranjothi	Barbara Wallace
Janice Denigan	Sandy Johnson	Kelly Park	Anthony Warner
Christie Dennison	Seanna Johnson	Mary Pat Buschner	Shirley Wayne
Jen Dhar	Taylor Johnson	Laura Patterson	Teri Weber
Vicki Dill	Carey Judson	Beth Pelch	Lisa Wehmer
Abby Doerge	Pam Kinsella	Kathleen Peterson	Judy Weng
Karen Erickson	Susan Klippel	Jack Phelean	Linda Wicks
Jennifer Esson	Kim Koenig	Cathy Pitman	Cindy Wiggins
Rebecca Fahy	Mary Kostner	Carol Pollnow	Debbie Wiggins
Darlene Ferber	Jonathan Kovack	Matthew Pulcine	Greg Williams
Fiona Ferguson	Mandy Kozminske	Mary Quinn	Shannon Wirth
Julie Fitzer	Kara Larsen	Stephanie Rich	Denise Wool
Rich Fitzer	Deana LaRue	Fern Robinson	
Kathryn Fitzgerald	Jackie Lavigne	Susan Ryan	
Kim Fitzgerald	Caley Lawlor	Cindy Saxby	

VOLUNTEER GROUPS

Advanced Technology	Loyola Academy
Ameren	Maryville University
Astellas Pharma	Mastercard
Barat Academy	National Charity League
Bayer	National Wood Floor Association
BizLibrary	Pi Beta Phi
Boeing	Princeton Club of St. Louis
Boy Scouts of America	Principia School
Boys and Girls Club	Rabo Bank
Brown & Brown	Royal Canin
Charles Schwab	Safety National
Color Art Construction	Sebben
Emerson	St. Louis Chapter Credit Union
Express Scripts	St. Peter's Middle School
Fontbonne University	Swank Media
Gateway Metro Federal Credit Union	Twin River Church
Giant Steps	Ursuline Alumnae
Grimco	Vantage Credit Union
Horner & Shifrin, Inc.	Villa Duchesne and Oak Hill School
International Food Products Corporate	Vreeland Capital
Kare Kamp	West Community Credit Union
Kemper Insurance	World Wide Technology
Kindness Krew	Young Men's Service League



DONORS



\$50,000-\$99,999

Adele Braun Charitable Foundation
Ameren
Mr. and Mrs. Jeff Call
Crawford Taylor Foundation
The Dana Brown Charitable Trust
Emerson Charitable Trust
Enterprise Holdings
Harlene and Marvin Wool Foundation
Mr. and Mrs. Paul Inman
Mr. and Mrs. Jeff Lay
Mr. and Mrs. Randy Lipton
NISA Investment Advisors, LLC

\$20,000-\$49,999

Mr. and Mrs. Martin Akins
Mrs. Suzie Andrews
Anonymous
Mr. and Mrs. John Beck
Boniface Foundation
Chapman Family Foundation
Citi Community Development
CLA Foundation
Endoscopy Development Company
GDIT
Dr. Virginia Herrmann
Hillman Family Foundation
Hyrdomat Inc.
Mr. and Mrs. Dennis Jones

Mr. and Mrs. James Keeven
Light a Single Candle Foundation
Mrs. Kate Lottes
Mr. and Mrs. Jim Martin
Mr. and Mrs. Ed Monser
Mr. and Mrs. Joe Pomeranke
Post Holdings
Puzzle Warehouse
Sidney R. Baer, Jr. Foundation
St. Louis Community Foundation
Mr. Donald Suntrup
Mr. and Mrs. Frank Trulaske
Mr. and Mrs. Paul Weber
William R. Orthwein, Jr. and Laura
Rand Orthwein Foundation

\$10,000-\$19,999

American Direct Marketing Resources LLC
Andy's Seasoning, Inc.
Anonymous
Mr. and Mrs. Richard Arnoldy Ascension
Mr. and Dr. Dennis Boone
Mr. and Mrs. Craig Bridell
Mr. and Mrs. Chris Burnes
Mr. & Mrs. Tom Chelew
Cigna Foundation
Mr. and Mrs. Jeffrey Cook
Mr. and Mrs. Matt Cook
Mr. and Mrs. Bradley Dannegger
Mr. and Mrs. Mike Davis
Mr. and Mrs. Rick Dirks
Edward Jones
Mr. and Mrs. Richard Fister
Gateway to Innovation
Grimco, Inc.
Mr. and Mrs. Mike Hanley
Mr. and Mrs. Bob Hardie
Mr. and Mrs. Paul Hatfield
Jack and Jill of America Inc.
Johnny Londoff Chevrolet
Josh Seidel Memorial Foundation
Mr. and Mrs. Troy Larsen
Mr. and Mrs. Mark Leeker
Macy's / Bloomingdale's
MiTek Inc.
Mr. and Mrs. Michael J. Nardini
Paz Family Foundation
PepsiCo
Mr. and Mrs. Dean Pichee
PNC Financial Services Group, Inc.
PNC Foundation
Mr. and Mrs. Ken Poteet
Pott Foundation
Mr. and Mrs. Richard Schultze

Stern Brothers and Co.
Mr. and Mrs. Chad Wallis
Webb Foundation
Ms. Denise Wool
Mr. and Mrs. David Young
Dr. and Mrs. Jason Young

\$5,000-\$9,999

Mr. and Mrs. Marc Abel
Mr. Tony Arnold
AT&T
Mr. and Mrs. Steve Bahn
Mr. and Mrs. Susan Barron
Mr. and Mrs. Jake Belcher
BioRankings
Blackspoke IT
Blues for Kids Foundation
Mr. and Mrs. Stephen Brauer
Elizabeth Carver
Mr. and Mrs. David Chadwick
Mr. Mark Clinton
Color Art Palette, Inc.
Mr. and Mrs. David Cortright
Mr. and Mrs. David Dempsey
Mr. and Mrs. Shelley Dressel
Mr. Chris Emert
Ms. Megan Etzkorn
Mr. and Mrs. Mark Fletcher
Mr. and Mrs. Mike Flood
Mr. and Mrs. Josh Foster
Mr. and Mrs. Seth Gausnell
Gertrude and William A. Bernoudy Foundation
Mr. and Mrs. Jim Glik
Dr. and Mrs. Jake Goldstein
Ms. Alicia Graham
Ms. Lynn Heimburger Wright
Mr. Ben Hillman
Mr. and Mrs. Stephen Holste
Mr. and Mrs. Scott Hudspeth
Insurance Industry Charitable Foundation
Jordan Charitable Foundation

Mr. and Ms. Jim Kelley
Mr. and Mrs. Ed Kniep
KNOWiNK
James Leopold
Lewis and Clark Capital
Mr. and Mrs. Johnny Londoff
Mr. and Mrs. Matt Luther
Mr. and Mrs. Daniel Macia
Medical Transportation Management, Inc.
Mr. Matt Morris
Mr. & Mrs. Jim Mosby
Mr. and Mrs. Mark Mummert
Ms. Chandra Niemann
Oakland Capital Partners II LLC
Mr. and Mrs. Steve Pelch
Mr. and Mrs. Jasmit Pujji
Reinsurance Group of America
Richard M. Schulze Family Foundation
Mr. and Mrs. Manny Rivera
Saint Louis Football Club
Mr. and Mrs. Robert Scheetz
Mr. and Mrs. Jay Shields
Dr. and Mrs. Eduardo Slatopolsky
Mr. and Dr. Mark Slocomb
St. Louis Region Porsche Club of America
Mr. and Mrs. Leonidas Stellakis
Mr. and Mrs. Joseph Stieven
Stifel Foundation
Mr. and Mrs. Michael Sullivan
Mr. and Mrs. Craig Suntrup
Mr. and Mrs. Gary Taylor
Technology Partners Inc
TeKnoluxion Consulting
The Benevity Community Impact Fund
The Dana Fund
The St. Louis Trust Company
The Sunnen Foundation
Thompson Coburn LLP

Tracy Family Foundation
Mr. and Mrs. Andrew Waltke
Mr. and Mrs. Scott Weis
Mr. and Mrs. Mike Wilhelm
Mr. and Mrs. Todd Wind
World Wide Technology Foundation

\$1,000-\$4,999

Mr. and Mrs. Brice Adamson
Mr. and Mrs. Kevin Alm
Mr. J.B. Andrews
APWA - Missouri Chapter
ARCO Construction
Armanino LLP
Mr. and Mrs. Doug Armstrong
Mr. and Mrs. Peter Avery
Azimuth Energy
Ballpark Village
Mr. and Mrs. Eric Benting
Berkadia Commercial Mortgage LLC
Mr. Thomas Berra
Ms. Emma Birge-Osborne
BJC at the Commons
Mr. and Ms. Daniel Boccabella Jr.
Dr. and Mrs. Matt Boland
Ms. Aisha Bowe
Mr. and Mrs. Jason & Sarah Bowman
Mr. and Mrs. Allen Brake
Mr. and Mrs. John Brunts
Mr. Nicholas Buck
Busey Bank
Mr. and Mrs. Dan Cannon
Ms. Lisa Cannone
Mr. and Mrs. Samuel Caputa
Cardinals Care
CGI Technologies and Solutions, Inc.
Charles Schwab Foundation
Ms. Necole Cheung
Commerce Bancshares Foundation

THANK YOU

Mr. and Mrs. Alexander
Cornwell
Mr. Dan Cox
Crazy Bowls & Wraps
Mr. and Mrs. Paul Curran
Mr. and Mrs. Rick Dames
DAS Acquisition Company,
LLC
De Smet Jesuit High School
Mr. and Mrs. Tim Desloge
Mr. and Mrs. Tom Desloge
Doing Good, LLC
DOT Foods, Inc.
Kristina Dujmovic
Mr. and Mrs. John Durien
East Missouri Foundation
Dr. and Mrs. Sean Edelstein
Mr. and Mrs. Anna Edgcomb
Ms. Judith Egan
EJ USA Inc.
ELCO Chevrolet Cadillac
Mr. and Mrs. Michael
Ellenhorn
Mr. and Mrs. Tim Emert
Mr. and Mrs. Michael England
Mr. and Mrs. Chuck Fandos
Mr. and Mrs. Tim Farquhar
Mr. and Mrs. Richard Fitzer
Ms. Laurie Fournie
Mr. Dan Fox
Mr. and Mrs. Daniel Freeland
Mr. and Mrs. Brad Frick
Mr. Adam Friedman and
Ms. Caroline Renner
Mr. and Mrs. David Garfinkel
Gateway Metro Federal
Credit Union
GFI Digital
Mr. Michael Gillotte
Mr. and Mrs. George Giudici
Glik's
Mr. Robert Graham
Mr. and Mrs. Randy Graham
Mr. and Mrs. Dino Grasso

Mr. and Mrs. Rick Gray
Greater St. Louis Book Fair
Foundation
Greek Orthodox Ladies
Philoptochos Society
Ms. Jasmina Hadzialic
Ms Lauren Haines
Mr. and Mrs. Michael Hanley
Mr. and Mrs. Jim Hannon
Ms. Sofia Head
Mr. and Mrs. Dale Hermeling
Mr. and Mrs. Paul Hillman
Mr. and Mrs. John Hogan
Holekamp Family Foundation
Mr. and Mrs. Justin
Hollensteiner
Mr. and Mrs. John Holst
Mr. and Mrs. Larry Howe
Mr. Thomas Huling
Husch Blackwell
Husmann Corporation
Ms. Carol Imo
Mr. and Mrs. Sandie Jansen
Mr. and Mrs. Jerry Jasiek
Ms. Patricia Johnson
Mr. and Mrs. David Jones
Keeley Cares, Inc.
Kennedy Capital Management,
Inc.
Ms. Beth Kerley
KMOV-TV
Mr. and Mrs. Joe Koenig
Mr. and Mrs. Kevin Konzen
KPMG Gives c/o Bergen
County's United Way
KPMG LLP St. Louis
Mr. and Mrs. Daniel Leach
Mr. and Mrs. Brandon
Lemmons
Ms. Stephanie Leung
Mr. Andy Lich
Mr. Jay Lockhart
Mr. and Mrs. Paul Lottes
Mr. and Mrs. Chris Lydon



Mr. and Mrs. Michael Lynch
Mrs. Meg Mannion
Dr. Alicia Marquat
Mastercard Inc
Mr. and Mrs. Brian Matlock
Mr. and Mrs. Matt McHugh
Medtronics
Mr. & Mrs. Ken Mersmann
Midwest Bank Centre
Mr. and Mrs. Gary Mindel
Mr. and Ms. Ron Moser
Mr. and Mrs. Chris Murphey
N-STORE Services, LLC
Negwer Materials, Inc.
Mr. and Mrs. Danny Nester
Mrs. Gay Noonan
O'Fallon Baseball Group
Mr. and Mrs. Michael O'Hare
Mr. and Mrs. Laura and Tom
Oldenburg
One 19 North Tapas Wine
Bar LLC
Dr. and Ms. Patrick Osborne
Mr. and Mrs. Matt Ott
Pace Properties
Parkside Financial Bank &
Trust
Paszkievicz Litigation Services
Ms. Zach Pearson
Mr. and Dr. Karl Petersen
Mr. and Mrs. James Pfitzinger
Mr. and Mrs. Andrew Phelan
Mr. and Mrs. Tommie Pierson

Mr. and Mrs. Cameron Pinzke
Mr. and Mrs. Keith Pittillo
Mr. Kurt Politte
Mr. & Mrs. Carol Pollnow
Ms. Sabrina Rallo
Regional Business Council
Regions Bank
Mr. and Mrs. Dennis Reid
Mr. and Mrs. Randy Ridenhour
Mr. and Mrs. Peter Rogers
Mr. and Mrs. Marcus
Rosenberg
Mr. Jeffrey Rovegno
Mr. and Mrs. Rob Rubbelke
Mr. Mike Ruffus
Saint Joseph Parish-Cottleville
Ms. Wanda Salzman
Mr. and Mrs. Drew Schenk
Ms. Elizabeth Schroeder
Mr. and Mrs. Tim Schurmann
Ms. Ann Seeney
Seiler Family Foundation
Mr. Ryan Shotkoski
Dr. and Mrs. Greg Sigmund
Simmons Bank
Ms. Claudia Skwiot
Mr. Paul Smith
Mr. and Mrs. Robert Snyder
Society of the Sacred Heart
South City Investment
Corporation
Mr. Dennis St. John
St. Louis Community College
Corporate Training Center
St. Louis Community Credit
Union
St. Louis Italian Invitational
Golf Tournament
Stark & Associates Inc
Tom Steinbrecher
Mr. Kyle Steiner
Mr. and Mrs. Mitch Stern
Mr. Curtis Steyers
Stifel Financial

Mrs. Teg Stokes
Mr. and Mrs. Brad Strahorn
Stude Properties Company
Stupp Bros. Bridge & Iron Co.
Foundation
Suburban Journals Old
Newsboys Fund for Children
Tarlton Corporation
Dr. and Mrs. Steven
Teitelbaum
The Buddy Fund
The Four Leaf Clover
Foundation
The Home Depot
The Prufrock Foundation
The Root & Zimmerman
Charitable Trust
The Vitaligent Community
Engagement Fund
Mr. and Mrs. Jerry Thomasson
Three Kings and Public House
Mr. and Mrs. Jim Tighe
Together Credit Union
True Fitness Technology, Inc.
Ms. Sarah Trulaske
Ms. Joanna Tschudy
Mr. Steven Tschudy
U.S. Bank Foundation
Employee Matching Gift
Program
UBS Matching Gifts Program
Mr. Craig Unruh
Mr. and Mrs. Raymond Van
de Riet
Vantage Credit Union
Mr. and Mrs. Keith Vidal
Von Gontard Family
Foundation
Mr. and Mrs. Chris Wahl
Mr. and Mrs. Tim
Walkenhorst
Mr. and Mrs. Jody Waller
Mr. Mike Welch
Mr. and Mrs. Peter Werner
West Community Credit
Union

Western Ready Mix
White Stone Fund, Inc.
Mrs. Paul Wirth
Ms. Kelly Wittenhauer Steiner
Wm. Boudoures Co.
Wong Family Foundation
Chris Wunderlich
Mr. and Mrs. Tom Yoxall

\$500-\$999

Alliance Technologies, LLC
Mr. and Mrs. Michael Amann
American Family Insurance
Baalmann Family Charitable
Fund
Mr. and Mrs. Nick Bahn
Mr. and Mrs. Kenneth Barker
Mr. and Mrs. Jeff Bauer
Mr. and Mrs. John Bayer
Mr. Joe Beaudean
Ms. Robin Bell
Mr. Chris Beyer
Mr. and Mrs. Andrew
Bosworth
Mr. and Mrs. Charles G. Boyce
Mr. and Mrs. Richard
Brosemer
Mr. and Mrs. Dan Buescher
Mr. and Mrs. Robert Byrne
Mr. and Mrs. Mario Cacioppo
Carey, Danis & Lowe, L.L.C.
Mr. and Mrs. Gerard
Carmody
Mr. and Mrs. Brian Chandler
Mr. and Mrs. Tony Clark
Mr. and Mrs. Donald Cobin
Collin McAtee Charitable
Fund
Ms. Hayley Corrine Bohnert
Mr. and Mrs. Daniel Dalton
Mr. and Mrs. Paul Dalziel
Mr. and Mrs. Michael Daniels
Mr. and Mrs. Suvir Dhar

Doc's Harley Davidson
Mr. and Mrs. Ben Eades
Ms. Debra Ebel
Mr. and Mrs. Jonathan Emert
Mr. and Mrs. Fredrik
Englehardt
Enterprise Bank & Trust
Ms. Elizabeth Erker
Fischer-Bauer-Knirps
Foundation
Frost Orthodontics
Mr. Dale Furtwengler
Mr. and Mrs. Richard Gelber
Geniecast LLC
Mr. and Mrs. John Gilliland
Ms. Julia Gray
Mr. and Mrs. David Grayson
Greensfelder, Hemker & Gale,
P.C.
Mr. Jordan Hall
Ms. Danielle Head
Mr. and Mrs. Mark Hemmann
Mr. and Mrs. Mark Hentschell
Mr. Gary Hirshberg
Mr. and Mrs. Stephen Hoerr
Mr. and Mrs. Robert
Hosenfelt
Mr. Bill Howard
Ms. Brooke Howard
Mr. and Mrs. William Hudson
Mr. Mark Hyman
HZJ, LLC
Incentive Concepts
JEMA
Mr. and Mrs. Bob Johnson
Kendra Scott Jewelry
Mr. and Mrs. John Kerber
Kingen Chiropractic Wellness
Center
Mr. and Mrs. JW Kisling
Ms. Barbara Kohm
Mr. and Mrs. Fred Kohut
KPMG LLP Dallas
KPMG U.S. Foundation, Inc.

Mr. and Mrs. Richard J.
Laitman
Mr. Jim Lally
Lewis Brisbois Bisgaard &
Smith
Mr. and Mrs. Al LoCascio
Mr. Kenneth Allan Luecke
Mrs. Stacy Lupo
Mr. and Mrs. Gary Maassen
Mark Joseph James
Foundation
Ms. Kristine Mauldin
Mr. Gregg McCollum
Mr. and Mrs. Shawn
McCutcheon
Mr. John Meinhardt
Mr. Nate Meyer
Ms. Jennifer Michel
Ms. Andrea Montecinos
Mr. and Mrs. Matt
Montgomery
Mr. and Mrs. Tom Moore
Mr. and Mrs. Matt Moore
Mr. and Mrs. Pat Murphy
Nest International, Inc.
Mr. Jason Nikodym
Mr. Stephen Noonan
Omicron Eta Omega Chapter
Alpha Kappa Alpha Sorority,
Incorporated
Mr. and Mrs. Bradley Partridge
Mr. and Mrs. Bill Patterson
Mr. and Mrs. Ronald Pimmel
Pitney Bowes Foundation
Ms. Mary Quinn
Mr. and Mrs. Kip Raske
Mr. and Mrs. John Reagan
Ms. Jane Richard
Dr. Casey Rowe
Sam and Marilyn Fox
Foundation
Sandberg Phoenix & von
Gontard P.C.
Mr. and Mrs. John Schaefer
Mr. and Mrs. Patrick
Schumann

THANK YOU

Mr. and Mrs. Andrew Sciaroni
Series Six
Mr. and Mrs. Chris Seward
Mr. and Mrs. Loyd Shantz
Ms. Shannon Shores
Dr. and Mr. Noaman Siddiqi
Dr. and Mrs. Paul Simons
Stephen F. Bahn Realty
Mr. and Mrs. James Strickland
Mr. & Mrs. Paul Swyer
Mr. Kenneth Tacony
Mr. and Mrs. Thomas Tangaro
Ten Talents Foundation
The Ravarino Family
Foundation
The St. Louis Service Bureau
The Vault
Ms. Kristin Thompson
Titanium Fitness
Unidev (Unified Development,
Inc.)
Ms. Carla Valenti
Mr. and Mrs. Ed Vandeven
Mr. & Mrs. Vin Capone
Mr. & Mrs. Tim Walsh
Ms. Sue Webb
Mr. and Mrs. Larry West
Mr. and Mrs. Chris Wilson
Mr. Jeffrey Young
YouthBridge Community
Foundation

\$100-\$499

Mr. Ajaz Abbas
Mr. and Mrs. James Adams
Ms. Linda Akers
Ms. Ella Altenbernd
Amazon Smile
Mr. and Mrs. Tom Anderson
Mr. and Mrs. Doug Anstoetter
Mr. Brad Badami
Ms. Maureen Bahn
Mr. and Mrs. Steven W. Baker
Ms. Michele Ball
Mr. and Mrs. Robert
Banstetter
Ms. Kristine Barr
Mr. & Mrs. Sally Barry
Mr. and Mrs. Jeremy Bass
Mr. and Mrs. Skip Batchelor
Becker Contracting Co, Inc.
BeLeaf Medical
Ms. Michele Berg
Berkshire Hathaway
HomeServices Alliance Real
Estate
Mr. and Mrs. Michael Bertz
Mr. Richard Bevis
Mr. Bret Beyer
Mr. and Mrs. Mark Bobak
Mr. and Mrs. George
Bolhafner
Ms. Mary Bouman
Ms. Alexis Boykin
Ms. Rebecca Boyle
Mr. and Mrs. Anthony
Branscomb
Mr. and Mrs. Robert
Breidecker
Mr. and Mrs. Jeff Brengarth
Brown & James, P.C.
Mr. and Mrs. Steven Burian
Ms. Holly Butler
Mr. Nick Cain
Ms. Maria Calsyn and
Mr. Soledad L. Van Emden

Caribbean Creme, Inc.
Mr. and Mrs. Gregg Cariolano
Ms. Ellen Carlson
Mr. and Mrs. Blaine Carroll
Ms. Karen Carroll
Mr. and Mrs. Matthew Carter
Mr. and Mrs. Jim Casagrande
Ms. Anne Cashel
Mr. Marc Champlain
Mr. and Mrs. Dennis Chandler
Ms. Laura Chong
Ms. Pamela Cleval
Mr. and Mrs. Jeff Cobb
Commercial Bank
Mr. and Mrs. Jeffery Comotto
Mr. Jeffrey Cook
Mr. Steven Cook
Mr. and Mrs. Stephen Cord
Mr. and Mrs. Michael Corrigan
Ms. Judie Courtney
Mr. and Mrs. David Cox
Mr. and Mrs. Andrew Cox
Crescent Parts & Equipment
Mr. Frederick Cronenwett
Ms. Dionne Curtis-Minner
Mr. and Mrs. Kevin Cushing
D2 Consulting, LLC
Mr. and Mrs. Chris Daming
Ms. Susan Dapron
Ms. Natasha Das
Mr. and Mrs. Richard
Davidson
Ms. Annie Davis
Mr. and Mrs. George Davis
Ms. Nicole Delaney
Dell Technologies
Mr. Antonio Demerett
Ms. Laura Derrington
Ms. Julie Diedrich
Mr. Carl Dothage
Mr. and Mrs. Kevin Dougherty
Mr. and Mrs. Larry Drury
Mr. and Mrs. Marc Duncan

Mr. and Mrs. Robert Dunn
Mr. and Mrs. Craig Dupra
Ms. Nora Ebersbach
Echo Valley Foundation
Mr. and Mrs. Bob Emert
Mr. and Mrs. Joe Erker
Ms. Sallie Evans
Ms. Peggy Fagen
Ms. Angela Faul
Ms. Jean Fidone
Ms. Rebecca Finch
Mr. Sam Fiorello
Mr. and Mrs. Richard Fister
Mr. and Mrs. Calvin Fletcher
Mr. Don Forlani
Mr. and Mrs. James Forst
Mr. and Mrs. Mark Forst
Mr. and Mrs. Peter Frane
Ms. Jill Frantti
Mr. and Mrs. Don Freber
Mr. Daniel Fries
Mr. and Mrs. Frank Friet
Mr. and Mrs. Francis
Gagnepain
Mr. and Mrs. Russell Gall
Mr. and Mrs. Michael
Gallagher
Gary Musick Productions
Mr. and Mrs. Mark Gdowski
Mr. and Mrs. Bradley Geene
Mr. Kyle George
Ms. Suzanne Germain
Ms. Prue Gershman
Mr. Larry Gideon and
Mrs. Bonnie Trickey
Ms. Donna Gilles
Ms. Nancy Gillespie
Mr. & Mrs. Brian Gilmore
Mr. and Mrs. Guy Giudici
Ms. Darcy Glidewell
Ms. Mary Ann Goldberg
Ms. Mary Beth Goldman
Mr. and Mrs. Robert
Goldstein

Richard and Isabel Goldstein
Family Foundation
Ms. Janice Grefenkamp
Mr. and Mrs. Dan Guirl
Mr. Arunmurthy Gurunathan
Mr. and Mrs. Leo Haas
Mr. Jason Hall
Mr. and Mrs. William Hall
Ms. Stephanie Hallahan
Ms. Dawna Hallsted
Mr. Jason Hancock
Mr. Norman Handshear
Mr. Albert Hanley
Ms. Gayla Hannon
Mr. and Mrs. Frederick Harper
Mr. and Mrs. Alan Haselhorst
Mr. and Mrs. Brad Henderson
Mr. and Mrs. Joseph
Hennessey
Mr. Todd Henry
Ms. Mary Hensley
Mr. Todd Hessel
Mr. and Mrs. Matthew Hey
Hill Investment Group
Mr. and Mrs. R. Hinkebein
Mr. and Mrs. Jere Hochman
Mr. Gary Hoeferkamp
Mr. and Mrs. Jeff Hoffman
Hoffmann Brothers
Mr. and Ms. Richard Holden
Mr. Gary Holmes
Mr. & Mrs. Robert Horsfield
Mr. and Mrs. Ronald Howard
Mr. Bart Hubbs
Mr. Mark Huck
Ms. Pat Hudson
Mr. and Mrs. Craig Hunt
Ms. Andrea Hupman
Mr. and Mrs. Drew Huston
Mr. Brock Ingmire
Intrado
Ms. Lindsay Ireland
Mr. Gus Jabr

Mr. and Mrs. Danny James
Ms. Patricia Jayne
Dr. and Dr. Tyler Jenkins
Mr. and Mrs. James L. Johnson
Mr. and Mrs. Addam Jones
Ms. Ashleigh Jones
Ms. Rachel Jones
Mr. Gopinatha Joshi
Mr. and Mrs. Seth Joy
Mr. and Mrs. Brian W. Kalcic
Ms. Joyce Kampwerth
Ms. Kelly Kassebaum
Kastner Family Charitable
Fund
Mr. and Mrs. Richard Kayser
Ms. Diane Keaggy
Mr. and Mrs. Daniel Kelley
Ms. Marilyn Kennedy
Kids who K.A.R.E. Camp
Mr. and Mrs. Jeff Kilwin
Mr. Eugene Koziatek
Ms. Rebecca Kühlenbeck
Mr. and Mrs. Trevor Ladner
Mr. and Mrs. David Lamping
Mr. Michael Lane
Mr. Matt Layne
Ms. Kathleen Leach-Ross
Mr. & Ms. Lance LeComb
Ms. Cynthia LeFort
Ms. Barbara Lenz
Mr. and Mrs. Mike Leopold
Mr. and Mrs. William Lester
Mr. Robert Lewis
Mr. Timothy Lindgren
Ms. Kimberly Lockett
Mr. Daniel London
Mr. Matthew Longueville
Mr. and Mrs. Jared Luther
Ms. Kerry Lyman
Mr. Miles Lynch
Mr. and Mrs. Sean Lynch
Mr. Kevin Lyons
Mr. and Mrs. Brian Lyss



Ms. Sandra Maciak
Ms. Anitra Mahari
Ms. Tobi Mahoney-Haskell
Mr. and Mrs. Michael Malloy
Ms. Carol Mange
Mr. Edward Mannion
Mr. and Mrs. Virgil Mantle
Mark and DeDe Nigh
Mr. and Mrs. Stephen Marsh
Mr. Jack Martin
Mr. and Mrs. Brian Martin
Ms. Kelli Massie
Ms. Cheryl Mather
Mr. Connor McCarthy
Mr. Michael McCracken
Mr. Christian McDonald
Ms. Kassi McKenzie
Ms. Tracy McLaughlin
Mr. and Mrs. Andy McMillen
Mr. Michael McNamara
Mr. Tim McQuaid and
Ms. Mary Pat Shelledy
Mr. and Mrs. Martin Mendez
Mr. and Mrs. David Metzger
Ms. Mitch Meyers
Mr. and Mrs. Douglas Milligan
Mr. and Mrs. Jason Moersch
Ms. Denise Molen
Ms. Sharon Morfeld
Mrs. Maude Morgan
Ms. Lindsey Morin
Mr. and Mrs. James Morrell
Mr. Jeffrey Mortland

Ms. Stacy Muller
Mr. Michael Murphy
Mr. and Mrs. Michael Murphy
Mr. David Murray
Mr. and Mrs. Richard Muth
Ms. Mary Neal
Ms. Deborah Newberg
Murphy
Newcomb Family Foundation
Mr. and Mrs. Andrew
Niermann
Ms. Theresa Nikolaus
Mr. Jeremy Noland
Mr. Joseph Nonnenkamp
Mr. and Mrs. Christopher
O'Hagan
Oakville Pallets
Mr. Richard Oliver
Orangetheory Fitness
Mr. Ron Orf
Mr. and Mrs. Thomas Osborn
Ms. Patricia Owca
Mr. Tanner Paige
Mr. and Ms. Joubert Palacios
Mr. and Mrs. Steve Parle
Ms. Rebecca Patel
Ms. Rebecca Patterson
Mr. and Mrs. Aaron Pawlitz
Ms. Renee Payton
Mr. and Mrs. Mike Peretz
Ms. Vaneisha Perkins
Ms. Alyson Petrick
Mr. Tyler Petty
Pi Beta Phi Alumnae Club of
St. Louis
Ms. Kathryn Piazza
Mr. Aaron Pilcher
Mr. John Pinto
Mr. and Mrs. C. Keith Plein
Ms. Katherine Pollnow
Mr. Justin Pollnow
Mr. and Mrs. Philip Polster
Mr. Paul Porch
Mr. Steven Powelson



THANK YOU

Ms. Janet Powers
Mr. and Mrs. Donald Pruitt
Mr. Eric Pugh
Mr. and Mrs. Tom Rehtiene
Mr. Gene Reece
Mr. and Mrs. Christopher Reid
Mr. Michael Reinberg
Mr. and Mrs. Bob Reynolds
Mrs. Joyce Riley
Mr. Brent Rinchiuso
Mr. & Mrs. Luke Rincker
RMG Investment Group LLC
Ms. Michelene Robertaccio
Mr. Mark Robson
Ms. Vicki Roche
Mr. and Mrs. John Roedel
Mr. and Mrs. Jeffrey Rosenblum
S.M. Wilson & Co.
Mr. and Mrs. Bryan Sacks
Mr. and Mrs. Gabriel Saldana
Mr. Andrew Schmidt
Mrs. Brenda Scholes
Ms. Laura Schuppe
Mr. & Mrs. David Scobee
Mr. and Mrs. Jermal Seward
Ms. Vicki Shaw
Mr. and Mrs. Phil Shayne
Mr. and Ms. Ronald Shebik
Ms. Lisa Shelley
Mr. and Mrs. Steve Shields
Mr. and Mrs. Derek Short
Mr. and Mrs. Jarrett Simpson
Mr. and Mrs. Steve Skretkowicz
Mr. and Mrs. Anthony Smith
Mr. and Mrs. Robert Snidman
Mr. Alec Solverud
Mr. Dustin Sotnyk
Mr. & Mrs. Jason Spann
Ms. Latisa Spears-Fowler
Ms. Melanie Stahlheber
Mr. Richard Stein
Mr. and Mrs. Adam Stillman
Ms. Michelle Storgion
Mr. and Mrs. Joseph Strasser
Ms. Mary Sullenstrup
Mr. and Mrs. Kevin Sullivan
Mr. and Ms. Grenville Sutcliffe
Ms. Elizabeth Sutton
Mr. and Mrs. Mark Swan
Mr. and Mrs. Andrew Taldo
Ms. Donna Tedeschi
The Cady Family Foundation
The Gap
The Gathering Place Church of God, Inc.
The RND Group LLC
The Sander Foundation
Ms. Babette Thea Cox
Mr. and Mrs. Brad Thompson
Mr. and Mrs. Carter Tines
TisBest Philanthropy
Mr. and Mrs. Santosh Tokekar
Mr. and Mrs. Daniel Touchon
Ms. Pamela Townsend
Mr. and Mrs. Laura Trachsel
Mr. Michael Traina
Mr. Jeffrey Trockman
TW Constructors LLC
United Way of Greater St. Louis
Ms. Kathleen Unwin
US Cloud
Mr. and Mrs. Joseph Valenti
Valenti's Design Build and Remodel LLC
Mr. and Mrs. Tom Valvo
Ms. Jacqueline Vanderford
Martha Vatterott Pod
Veterans United Home Loan
Ms. Madonna Visintine
Ms. Jenny Voelker
Ms. Christina Vogel
Mrs. Chip Walker
Ms. Stephanie Walpert
Ms. Susan Waltke

Mr. and Mrs. Keith Warzecha
Ms. Vicky Weber
Ms. Andrea Weile
Mr. and Mrs. Jake Whittle
Ms. Jaquelyn Whitworth
Ms. Savannah Wiley
Ms. Ebony Williams
Mr. and Mrs. Stephen Williams
Mr. David Wilt
Ms. Patricia Wiltse
Mr. Howard Winship and Ms. Kristin Powell
Mr. Daniel Woods
Mr. and Mrs. Neil Wright
Mr. and Mrs. Steve Wuennenberg
Mr. & Mrs. Mark Wunderlich
YPO St. Louis Chapter
Ms. Nicole Zavradinov
Ms. Catherine Zesch
Ms. Wendy Zimet



IN-KIND

ACME Constructors
Ms. Helen Ahn
Anonymous
APWA - Missouri Chapter
Aquarius Limited
Armanino LLP
Arsenal Credit Union
Athleta - Town & Country
Ms. Anne Bearden
Becker Contracting Company
Bellefontaine United Methodist Church
Bender Graphics, Inc.
Boy Scouts of America Troop 782
Ms. Mary Jo Brennan
Ms. Christie Brinkman
Brown & James, P.C.
Ms. Danielle Burroughs
Butlers Pantry
Mr. Mario Cacioppo
Ms. Lizanne Campbell
Canterbury Enterprises
Mr. & Mrs. Dennis Carey
Carmax
Centene Corporation
Chaminade College Preparatory School
Chesterfield Day School
Christ, Prince of Peace Catholic School
Church of Jesus Christ of Latter Day Saints
Churchill School
Ms. Brittany Clark
Ms. Tammy Clarke
Club Fitness
Color Art
Mr. & Mrs. Cameron Conway
Rotary Club of Cottleville/Weldon Spring
Craftsmen Utility Trailer
Crescent Parts and Equipment
Ms. Gail R Crosby
Delta Dental Of Missouri
Delta Stokes Seward
De Smet Jesuit High School
Dillard's
Directorie
DOT Foods, Inc.
Down Syndrome Association Of Greater St. Louis

Dr. & Mrs. Sean Edelstein
Mr. Eric Fischer
Mr. & Mrs. Josh Foster
Garcia Properties
Gateway Metro Federal Credit Union
GDIT
GFI Digital
Gillespie Public Library
Girl Scouts of Eastern MO
Girl Scout Troop #2720
Girl Scouts - St. Catherine Laboure
Mr. & Mrs. Jim Glik
Mr. & Mrs. Robert Goldberg
Good Shepard Lutheran
Grey Eagle Distributors
Grimco, Inc.
Ms. Dudley Grove
Hacienda Mexican Restaurant
Hale Communications
Handi-Craft Company
Handshake
Mr. & Mrs. Bob Hardie
Henry Elementary PTO
Ms. Sarahanne Heredia
HIIT314
Holy Infant
Holy Redeemer Catholic School
Hungry Planet
InDebted.Co
Insperity
JEMA
Jewish Community Centre
Ms. Rachel Jones
Jubilee Church
K. Hall Studio
Kendra Scott Jewelry
Kids who K.A.R.E. Camp
Ms. Linda Kilwin
Kingen Chiropractic Drive
Kirkwood United Methodist
Knights Basketball Academy

Ms. Mary Koestoeer
KPMG
Ladue Early Childhood Center
Laurie Solet Boutique
Life Time Fitness - Frontenac
Ms. Stacy Lupo
Mary Queen Of Peace School
Maxar
Ms. Erin McDermott
Mr. & Mrs. Andy McMillen
Mercer Inc.
Metro Academics & Classical High School
Midwest Risk Partners
Missouri Baptist University
MT Fitness Drive
National Charity League
National Wood Flooring Association
Operation Food Search
Oracle/NetSuite
Orangetheory Concord
Orangetheory Oakville
Orion Apartments
Party Hop Shop
Ms. Laura Patterson
Ms. Beth Pelch
Mr. Dean Pichee
Pitney Bowes
Ms. Nancy Pope
Princeton Club of St. Louis
Public Lands Alliance
PURE -- People for Urban and Rural Education
Pure Storage
Realty One Group
RGA
Ms. Janet Roeder
Roeslein & Associates
Rohan Woods
Rossman School
Rotary Club Weldon Springs
Ms. Maureen Russell

S.M. Wilson and Company
Salon Two One Zero
Mr. & Mrs. Robert Scheetz
Mr. & Mrs. Drew Schenk
Ms. Julie Schroeder
Mr. & Mrs. Joe Schulz
Scrubs & Beyond
Simply Clean
Sincerely, Everest
Sinha Family Dentistry
Slalom Consulting
SMPS
Soles4Souls, Inc.
South City Investment Corporation
Speed Page
Mr. Colin Sprung
St. Ambrose Society
St. Clare of Assisi Church
St. Gabriel the Archangel Parish
St. Louis Alliance for Period Supplies
St. Louis Area Foodbank
St. Louis City Democrats
St. Louis Knitters Guild
St. Louis Sting 2008 Hockey Team
St. Nicholas Family Life Center
St. Nicholas Philoptochos
St. Patrick Center
St. Peter Catholic School
Staples Promotional Products
Ste. Genevieve du Bois
STL Sai Center
Team Hartzell - United Healthcare
Technology Partners INC
The Chris Long Foundation
The Gap
The Home Depot
The St. Louis Service Bureau
The Synapsory



The Vitaligent Community Engagement Fund
TKO DJ's
Two Men & A Truck
UMSL
United Legwear Co. LLC
Ursuline Academy
US Cloud
USA Mortgage
Vantage Credit Union
Veterans United Home Loans
Washington University Alumni
West Community Credit Union
Westchester Elementary School
Westminster Christian Academy
Mr. & Mrs. David Wicks
Win Warehouse
Ms. Abby Wycoff
Wyman Center @ Brittany Woods Middle School
Ms. Tracy Yates
Youth in Need

IN

memory

Martrayl Anderson

Mr. Carl Dothage

J Andrews

Mr. and Mrs. Larry Howe

Denise Bumb

Mr. and Mrs. William Hall

Brian Chamberlin

Ms. Nancy Deluca

Ms. Ann Desmond

Ms. Kate Desmond

Ms. Blake Dowling

Mr. Don Forlani

Richard Goldstein

Mr. and Mrs. Robert

Goldstein

Mr. and Mrs. George Kleine

Mr. Miles Lynch

Mr. and Mrs. Douglas
Milligan

Mr. Craig Petefish

RMG Investment Group
LLC

Ms. Vicki Roche

Mr. Jeffrey Trockman

Ms. Sue Yeatts

Carol Dean Chitwood

Ms. Gayla Hannon

Dottie Connell

Mr. and Mrs. Don Freber

Jean Dandino

Mr. Tim Garnett

Mr. and Mrs. Joseph
Strasser

Lisa Dixon

Ms. Wendy Johnson

Michael Douglas

Ms. Mary Tesson

Mike Edgar

Mr. and Mrs. Craig Dupra

Gary Musick Productions

Mr. and Ms. Richard Holden

Ms. Marilyn Kennedy

Ms. Stacy Muller

Carrie Gillotte

Mr. Michael Gillotte

Pheobe Virginia Ebel

Ms. Debra Ebel

Nancy Herron

Mr. and Mrs. Steven Baker

Mark Mannion

Mr. and Mrs. JW Kisling

Ms. Lucy Dolan

Mr. Edward Mannion

Ms. Dianne Meine

James McCartney

Mr. and Mrs. Phillip Desloge

Leslie Murphy

Ms. Maureen Bahn

Thomas Noonan

Mr. and Mrs. Matt Moore

Stephen Patrick

Mrs. Sandra Patrick

Janet Porch

Robert Barnard

Elizabeth Carver

Mr. and Mrs. William Lester

Mr. and Mrs. John Roedel

Mr. and Mrs. James

Sandfort

Mr. and Mrs. Robert

Snidman

Norman Rosenfet

Mr. and Mrs. Robert

Hosenfelt

Judy Ruffus

Mr. Mike Ruffus

James Schumacker

Mr. and Mrs. Blaine Carroll

Ms. Susan Davis

Ms. Mary Hensley

Mr. and Mrs. Robert

Horsfield

Mr. & Mrs. Randy Valli

Mr. John Gaal

Karen Ann Veit

Mr. and Mrs. Matthew
Carter

Mr. and Mrs. Kip Raske

The RND Group LLC

Brian Walker

Mr. Carl Dothage

Richelle Weisbrod

Ms. Kerry Lyman

Rev. Roderic D. Wiltse

Ms. Patricia Wiltse

Jim Wyant

Mr. Paul Porch

Linda Akers

Mr. and Mrs. Stephen Cord

Sanjana Alur

Mr. and Mrs. Jim Klug

APWA PWX Speakers

APWA - Missouri Chapter

Stephen Bahn

Ms. Vicki Gelber

Dan Buescher

Steve Selby

Ms. Megan Warnick

Camryn

Ms. Renee Payton

Kathy Carmody

Mr. and Mrs. Richard
Davidson

Ms. Ann DeBerge

Ms. Catherine Raybuck

Berkley Conley

Berkshire Hathaway
HomeServices Alliance
Real Estate

Customer Experience Operations Lead Team

Dan Buescher

Lucy Danis

Ms. Vicki Gelber

Titan Davis and Family

Mr. Jason Nikodym

Chris Emert

Ms. Laura Schuppe

Dr. Stanley Feldman

Ms. Vicki Gelber

IN

honor

Aaron Fields and Dudley Grove

Mr. and Mrs. James Johnson

Shawn Foster

Mr. and Mrs. Josh Foster

Sonja Fuiry

The Muny

Richard and Elizabeth Gerrity

Ms. Michelene Robertaccio

Michael Hanley

Mr. Robert Lewis

Rose Hanley

Mr. and Mrs. Paul Curran

Mr. and Mrs. George Davis

Dr. Virginia Herrmann

Mr. and Mrs. William

Hudson

Ms. Sandy Johnson

Mr. and Mrs. David Scobee

Mr. Steven Shepley

Rose Hanley and Miranda Jones

Mr. and Mrs. Bob Johnson

Elizabeth Harry

Ms. Kelly Kassebaum

Dale Hermeling

Bevy Beimdiek

Maureen Hogan

Ms. Katy Dowd

Brock Ingmire

Ascension

Jim and Sandie Jansen

Ms. Kristine Barr

Dr. Kumaralingam and Dr. Sivakumar

Mr. Gary Hoeferkamp

Little Helfenstein Neighbors

Mr. Michael Lane

Amalia Fister Lottes

Mr. and Mrs. Richard Fister

Lindsey Morin

Mr. Andrew Schmidt

Tom Noonan

Mr. and Mrs. Matt Moore

Jeanette Osterly

Ms. Anne Klein

Beth Pelch

Mr. and Mrs. Anna
Edgcomb

The Pieper Family

Mr. and Mrs. Steve
Skretkovicz

Troy and Stephanie Piper

Mr. and Mrs. Andrew Taldo

J.C. and Lauren Plebon

Tim McQuaid

Judy Sakai

The Muny

Taneal Sanders

Mr. and Mrs. Carter Tines

Amy Schenk

Mrs. Joyce Riley

Lake Schultz

Julia Hoffman

Jay and Maria Shields

Dan Buescher

Madison Steinkamp

Veterans United Home
Loans

Teg Stokes

Chris Seward

Carla Valenti

Mr. and Mrs. Calvin
Fletcher

Jenny Voelker

Mr. and Mrs. Steven W.
Baker

Maria Walton

Ms. Michelene Robertaccio

Kurt Wunderlich

Chris Wunderlich



LITTLE BIT leadership

President

Marty Akins

Vice President

Kelly Weis

Chair Emeritus

Suzie Andrews



Michael Amann

Nick Bahn

Sarah Bowman

Keith Brooks

Chris Emert

Michael England

Richard E. Fister, Jr.

Susan Gausnell

Alicia Graham

Karen Grasso

Dwayne James

Patricia Johnson

Gary Mindel

Eric Pugh

Meg Riney

Brian Russell

Matt Snyder

Rebecca Vidal

Andrew Waltke



YOUNG PROFESSIONALS BOARD

President

Ben Hillman

Vice President

Ashley Ulrich

Callie Andrews

Jake Andrews

Jack Benage

Hayley Bohnert

Dan Freeland

Elliot Glik

Katherine Hollensteiner

Jim Kelley

Matt Luther



EXECUTIVES

Chief Executive Officer

Miranda Walker Jones

Chief Development Officer

Michelle Abel

Chief Operating Officer

Tom Tangaro

“With the entire Little Bit team
of staff and volunteers,
no needs are left unmet.”

PRINCIPAL

This project has been supported by the Missouri Department of Economic Development's Neighborhood Assistance Program.

thank you



**CONTACT US
TO LEARN MORE!**

thelittlebitfoundation.org

314.669-0040



MAIL LABEL